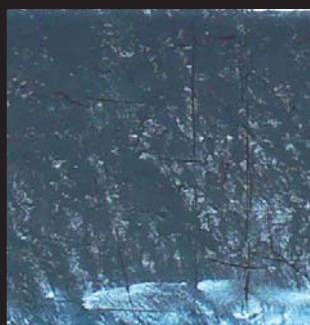


Desert



tressse

Chrome



Avio platinum



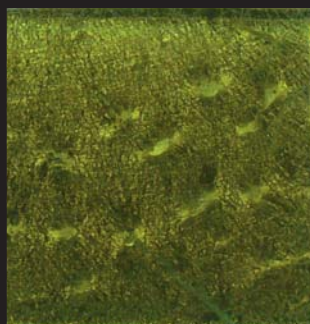
Platinum



Purple platinum



Green platinum



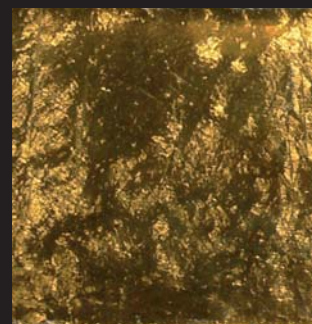
Lime green platinum



Brown platinum



Coal platinum

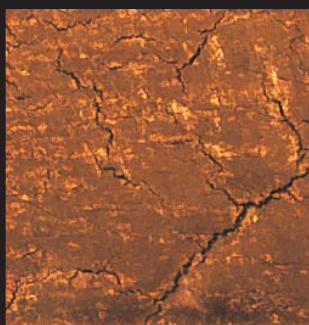


Yellow topaz platinum

Gold



Amber gold



Bronze gold



Gold



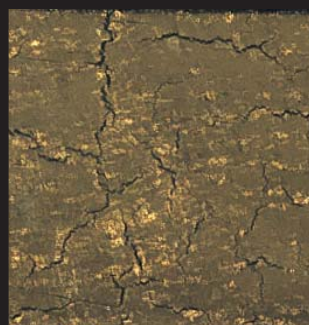
Green gold



Brown gold



Copper gold



Velvet green gold



treesse

Desert

Vetro selezionato colorato a vari spessori, con utilizzo di materiali preziosi all'interno.
Cotto tre/quattro volte a seconda dello spessore.
Caratterista del prodotto sono le sfumature che cambiano a seconda della luce a cui viene esposto.
Spessori disponibili : 9 mm

*Original Italian first quality coloured Glass, with genuine gold and platinum.
This product is fired three/four times depending on the thickness.
Characteristic of this line is gradation of colours which changes according to light it is exposed.
Available thickness : 9 mm (10 mm - 12 mm on request)*

FORMATI

Sizes

2,5 x 2,5 cm
1" x 1"

5 x 5 cm
2" x 2"

2,5 x 5 cm
1" x 2"

10 x 10 cm
4" x 4"

2,5 x 30 cm
1" x 18"

1,5 x 30 cm
3/5" x 18"

LUOGHI D'IMPIEGO

DESTINATIONS



Abitazioni
Domestic Applications



Alberghi
Hotels



Ristoranti - Bar
Restaurants - Cafés



Uffici
Offices



Chiese
Churches



Negozi
Shops



Piscine
Swimming-pool

*Hand made ceramic was where we started 25 years ago. Reconstituted marble was our second challenge.
Glass "transformation" is our new passion!*

*Modelling glass, changing its natural colors; combining several layers of glass with genuine gold and platinum;
"playing with fire" to get amazing effects is our everyday work.*

Experience, innovation and creativity make our glass collections unique.

Every single piece is a hand made piece of art.